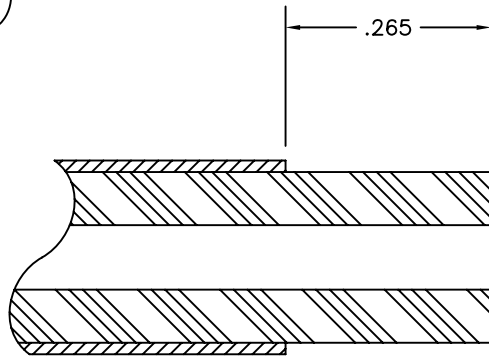
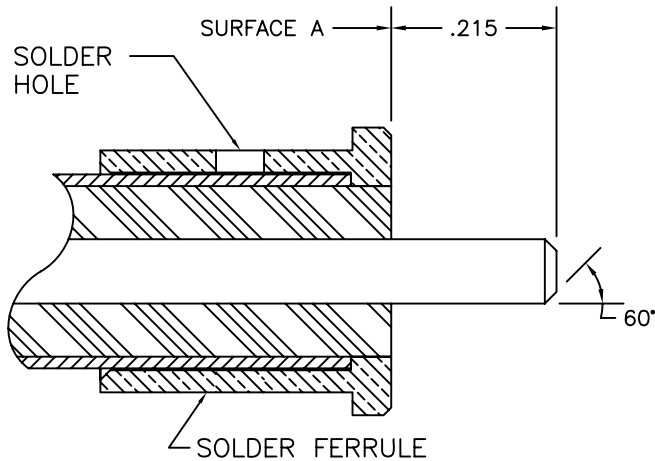


1.



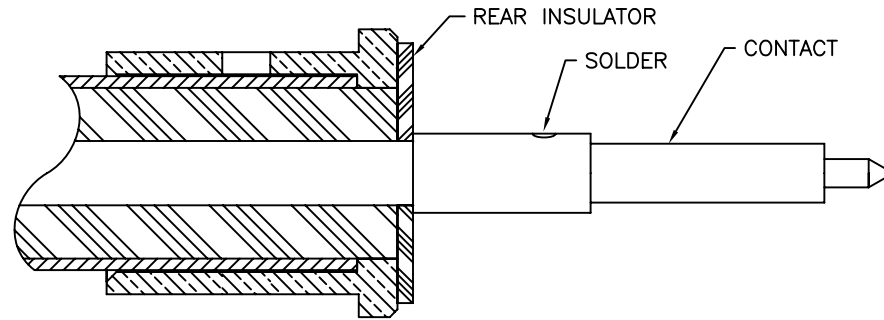
1. TRIM CABLE, DIELECTRIC, AND INNER CONDUCTOR TO DIMENSION SHOWN.

2.



1. SLIDE CLAMP NUT ON CABLE.
2. TRIM DIELECTRIC FLUSH TO SURFACE "A", WITHOUT NICKING INNER CONDUCTOR.
3. FILE A 60° ANGLE ON END OF INNER CONDUCTOR.
4. SOLDER FERRULE AS SHOWN USING 60/40.


3.



1. INSTALL REAR INSULATOR.
2. BOTTOM CONTACT AGAINST REAR INSULATOR.
3. SOLDER CONTACT AS SHOWN USING 60/40.

4.

INSTALL CONTACT/FERRULE SUBASSEMBLY INTO BACK OF CONNECTOR. TIGHTEN CLAMP NUT TO 15 INCH LBS.

USED ON 53-020-1527-70		 SRI CONNECTOR GAGE CO. 751 NORTH DRIVE MELBOURNE FL. 32934	
DIMENSIONS ARE IN INCHES TOLERANCES			
DECIMALS	FRACTIONAL	ANGULAR	
.X ±.030	± 1/64	.X° ±1°0'	.X°X' ±15'
.XX ±.015			
.XXX +.005			
DRAWN JDM	DATE		
SIZE A	FSCM NO. OHMO1	SHEET 1	USED ON 53-020-1527-70

TITLE
ASSEMBLY INSTRUCTIONS
TNC JACK BULKHEAD TO
.250 LL S/R CABLE