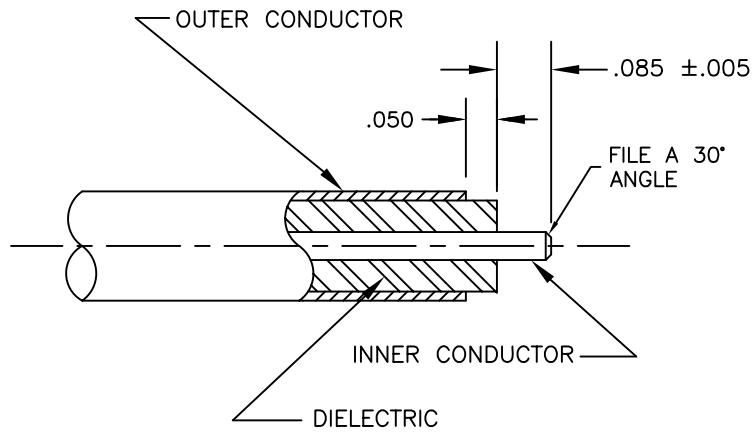
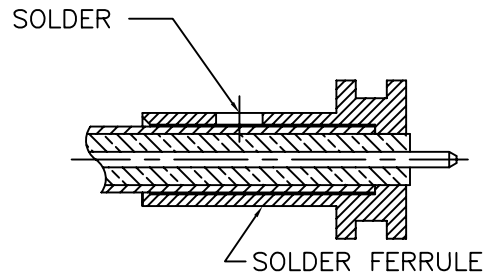


1.



1. TRIM CABLE, DIELECTRIC, AND INNER CONDUCTOR TO DIMENSIONS SHOWN.

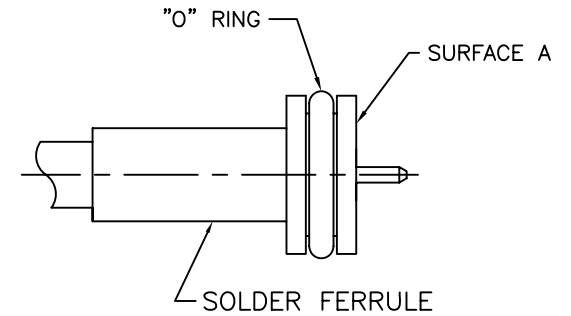
2.



1. SLIDE CLAMP NUT ON CABLE
2. SOLDER FERRULE AS SHOWN USING 60/40.

3.


26-000-1585-40



1. TRIM DIELECTRIC FLUSH TO SURFACE A.
2. INSERT "O" RING INTO GROOVE OF FERRULE AND PROCEED TO STEP #4.

4.

INSTALL FERRULE SUBASSEMBLY INTO BACK OF CONNECTOR. TIGHTEN CLAMP NUT TO 15 INCH LBS.

USED ON 26-000-1585-40		 SRI CONNECTOR GAGE CO. 751 NORTH DRIVE MELBOURNE FL. 32934	
DIMENSIONS ARE IN INCHES TOLERANCES			
DECIMALS	FRACTIONAL	ANGULAR	
.X ±.030	± 1/64	.X° ±1'0"	.X°X' ±15'
.XX ±.015			
.XXX ±.005			
DRAWN JDM	DATE		
SIZE A	FSCM NO. OHMO1	SHEET 1	USED ON 26-000-1585-40

TITLE
 ASSEMBLY INSTRUCTIONS
 2.4mm PLUG TO
 .085 S/R CABLE