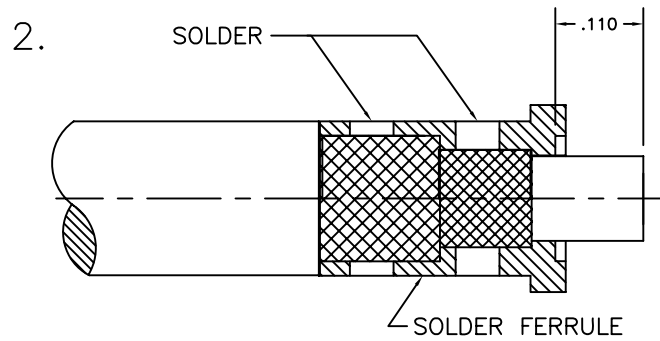
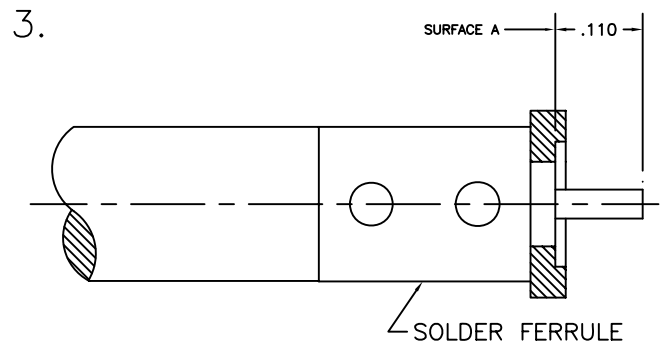


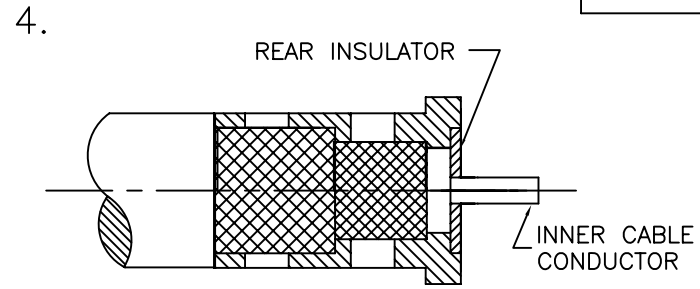
1. TRIM BRAID, DIELECTRIC, AND INNER CONDUCTOR TO DIMENSIONS SHOWN.



1. SLIDE SHRINK TUBING AND CLAMP NUT ON CABLE
2. SOLDER FERRULE AS SHOWN USING 60/40.




1. TRIM DIELECTRIC FLUSH TO SURFACE A



1. INSTALL REAR INSULATOR.

5. INSTALL FERRULE SUBASSEMBLY INTO BACK OF CONNECTOR. TIGHTEN CLAMP NUT TO 15 INCH LBS. SLIDE SHRINK TUBING OVER REAR OF CLAMP NUT. APPLY HEAT TO SHRINK.

USED ON 25-020-1563-90		 SRI CONNECTOR GAGE CO. 751 NORTH DRIVE MELBOURNE FL. 32934	
DIMENSIONS ARE IN INCHES TOLERANCES			
DECIMALS	FRACTIONAL	ANGULAR	
.X ±.030	± 1/64	.X° ±1°0'	.X°X' ±15'
.XX ±.015			
.XXX ±.005			
DRAWN LMW	DATE		
SIZE A	FSCM NO. OHMO1	SHEET 1	USED ON 25-020-1563-90

TITLE
ASSEMBLY INSTRUCTIONS
2.9mm JACK BLKD TO
HP160 CABLE