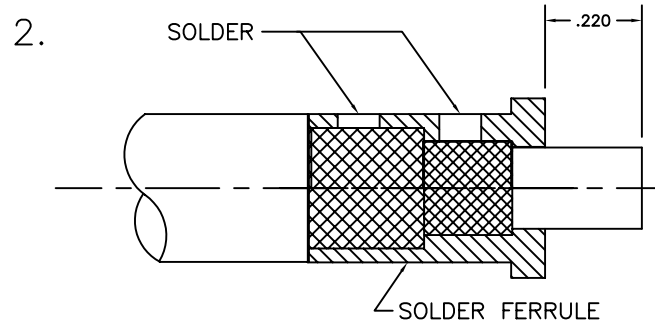
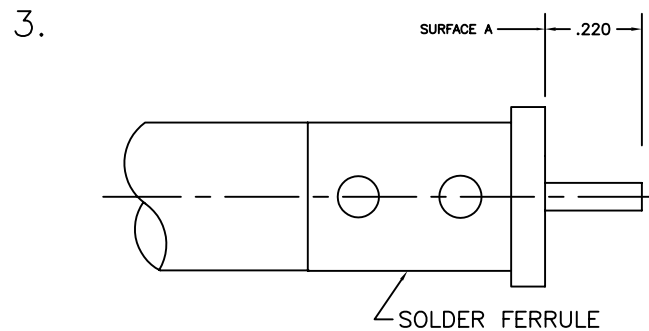


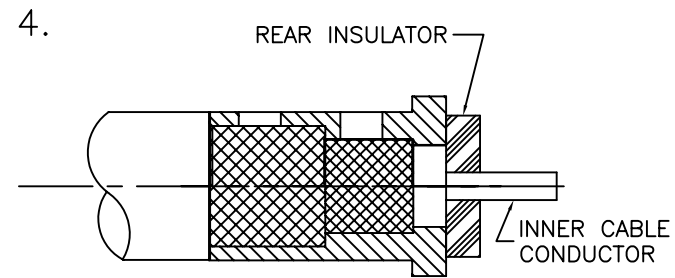
1. TRIM BRAID, DIELECTRIC, AND INNER CONDUCTOR TO DIMENSIONS SHOWN.



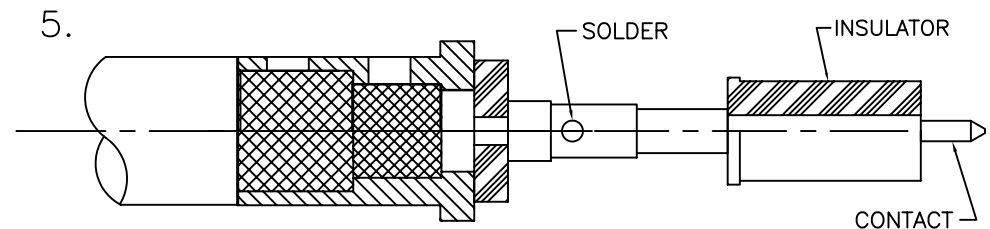
1. SLIDE SHRINK TUBING AND CLAMP NUT ON CABLE
2. SOLDER FERRULE AS SHOWN USING 60/40.



1. TRIM DIELECTRIC FLUSH TO SURFACE A




1. INSTALL REAR INSULATOR.



1. BOTTOM CONTACT AGAINST REAR INSULATOR.
2. SOLDER CONTACT AS SHOWN USING 60/40.
3. SLIDE FRONT INSULATOR ON CONTACT AS SHOWN.

6. INSTALL CONTACT/FERRULE SUBASSEMBLY INTO BACK OF CONNECTOR. TIGHTEN CLAMP NUT TO 15 INCH LBS. SLIDE SHRINK TUBING OVER REAR OF CLAMP NUT. APPLY HEAT TO SHRINK.

| | | | |
|--|-------------------|--|---|
| USED ON 20-000-1535-00 | |  SRI CONNECTOR GAGE CO. 751 NORTH DRIVE MELBOURNE FL. 32934 | |
| DIMENSIONS ARE IN INCHES TOLERANCES | | | |
| DECIMALS | FRACTIONAL | ANGULAR | |
| .X ±.030 | ± 1/64 | .X° ±1°0' | TITLE ASSEMBLY INSTRUCTIONS SMA PLUG TO LL 335 CABLE |
| .XX ±.015 | | .X°X' ±15' | |
| .XXX +.005 | | | |
| DRAWN JDM | DATE | | |
| SIZE A | FSCM NO. OHMO1 | SHEET 1 | USED ON 20-000-1535-00 |