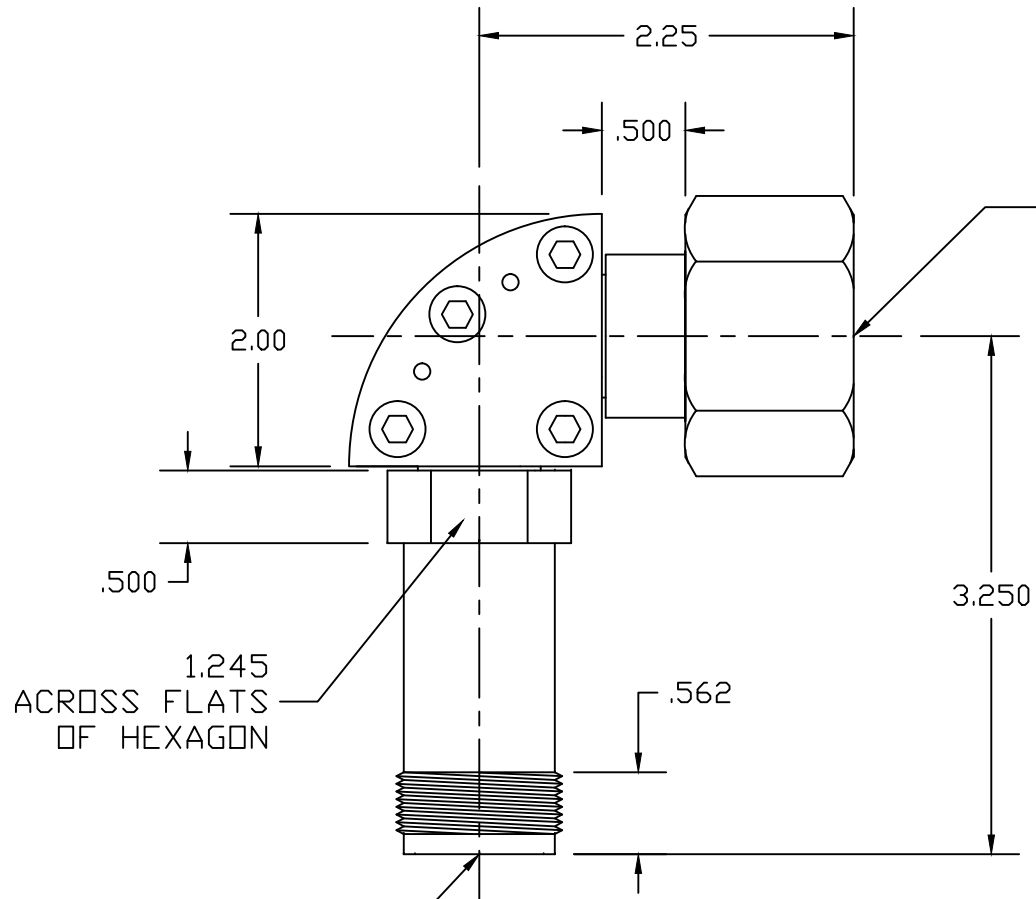



NOTES:

88-989-2099-15



INTERFACE AND COUPLING NUT DIMENSIONS SHALL BE AS SPECIFIED IN ASNAF-68-38A/2A.

INTERFACE DIMENSIONS SHALL BE AS SPECIFIED IN ASNAE-68-38A/2A.

LTR	DESCRIPTION	DATE	APPR.	DRAWN LRH	CHECKED	USED ON	 SRI CONNECTOR GAGE CO. 751 NORTH DRIVE MELBOURNE FL. 32934
-	REL	01/00		APPR.	SCALE NTS	CN-L0222-01	
				UNLESS OTHERWISE SPECIFIED: 1. REMOVE ALL BURRS 2. BREAK ALL CORNERS & EDGES .005 R. MAX 3. CHAMFER 1st & LAST THREADS 45° 4. SURFACE FINISHED 32√ UNLESS OTHERWISE SPECIFIED. 5. DIAMETERS ON COMMON CENTERS TO BE CONCENTRIC WITHIN .002 T.I.R. 6. ALL DIMENSIONS ARE AFTER PLATING.		MATERIAL	TITLE
				DIMENSIONS ARE IN INCHES TOLERANCES		ALUMINUM	MLT 50 ohms RIGHT ANGLE
				DECIMALS .X ±.030 .XX ±.010 .XXX +.005	FRACTIONAL ± 1/64	FINISH HARD ANODIZE	
					ANGULAR .X° ±1°0' .XX' ±15'	SIZE A	SHEET 1
						FSCM NO. OHMO1	DWG. NO. 88-989-2099-15