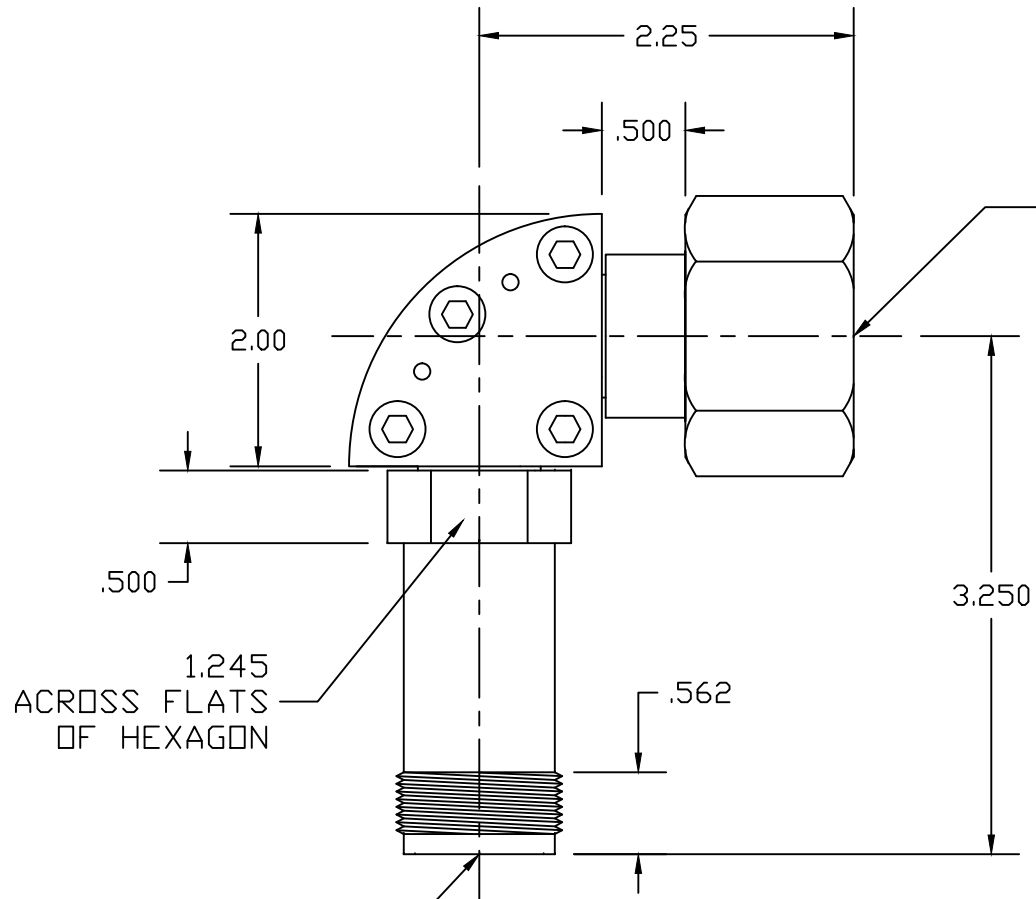



NOTES:

88-989-2000-15



INTERFACE AND COUPLING NUT DIMENSIONS SHALL BE AS SPECIFIED IN ASNAF-68-38A/2A.

INTERFACE DIMENSIONS SHALL BE AS SPECIFIED IN ASNAE-68-38A/2A.

LTR	DESCRIPTION	DATE	APPR.	DRAWN LRH	CHECKED	USED ON	 SRI CONNECTOR GAGE CO. 751 NORTH DRIVE MELBOURNE FL. 32934	
-	REL	01/00		APPR.	SCALE NTS	CN-L0222-01		
				UNLESS OTHERWISE SPECIFIED: 1. REMOVE ALL BURRS 2. BREAK ALL CORNERS & EDGES .005 R. MAX 3. CHAMFER 1st & LAST THREADS 45° 4. SURFACE FINISHED 32√ UNLESS OTHERWISE SPECIFIED. 5. DIAMETERS ON COMMON CENTERS TO BE CONCENTRIC WITHIN .002 T.I.R. 6. ALL DIMENSIONS ARE AFTER PLATING.		MATERIAL	TITLE  MLT 50 ohms RIGHT ANGLE	
						ALUMINUM		
						FINISH		
						HARD ANODIZE		
				DIMENSIONS ARE IN INCHES TOLERANCES		SIZE	FSCM NO.	
				DECIMALS .X ±.030 .XX ±.010 .XXX ±.005	FRACTIONAL ± 1/64	ANGULAR .X° ±1°0' .X'X' ±15'	SHEET 1	DWG. NO. 88-989-2000-15