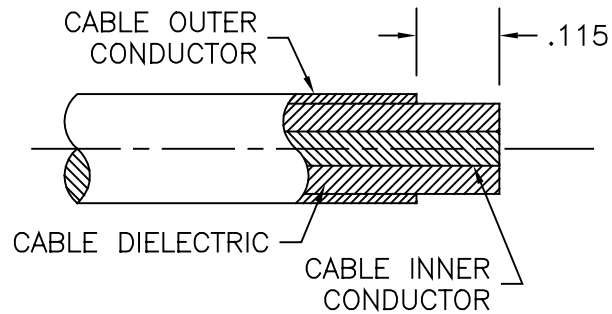
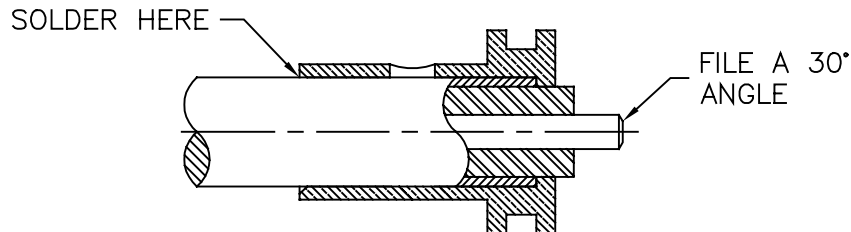


1.



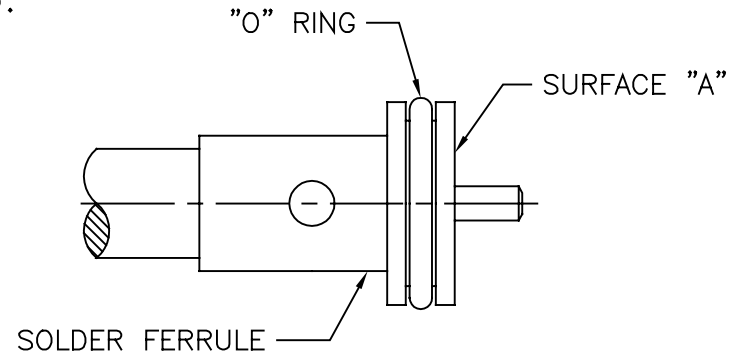
1. TRIM CABLE, DIELECTRIC, AND INNER CONDUCTOR TO DIMENSIONS SHOWN.

2.



1. SLIDE CLAMP NUT ON CABLE
2. SOLDER FERRULE AS SHOWN USING 60/40.


3.



1. TRIM DIELECTRIC FLUSH TO SURFACE A
2. INSERT "O" RING INTO GROOVE OF FERRULE AND PROCEED TO STEP.

4.

INSTALL FERRULE SUBASSEMBLY INTO BACK OF CONNECTOR. TIGHTEN CLAMP NUT TO 15 INCH LBS.

USED ON 84-000-1547-80		 SRI CONNECTOR GAGE CO. 751 NORTH DRIVE MELBOURNE FL. 32934	
DIMENSIONS ARE IN INCHES TOLERANCES			
DECIMALS	FRACTIONAL	ANGULAR	
.X ±.030	± 1/64	.X° ±1'0"	
.XX ±.015		.X°X' ±15'	
.XXX +.005			
DRAWN LRH	DATE 04/02		TITLE ASSEMBLY INSTRUCTIONS 1.85mm PLUG TO .047 S/R CABLE
SIZE A	FSCM NO. □HMO□1	SHEET 1	USED ON 84-000-1547-80